

2021

# picanto

LX | EX | GT Line | X Line



The Power to Surprise



# The centre of attention

## The 2021 Picanto

If the city makes you feel young and alive, and you're eager to explore new places, you've found a soul mate in the Picanto. It may be small, but it's roomy inside, and it's full of big ideas.



### Kappa 1.2 MPI engine

The CVVT MPI engine with piston-cooling jets and coated piston rings combines efficiency, power and dynamic performance. Power: 62 kW @ 6,000 rpm Torque: 122 Nm @ 4,000 rpm



### Automatic transmission

The 4-speed automatic transmission offers quiet operation and shift points that are set to maximise smoothness, even in start-stop city traffic.



### Manual transmission

The 5-speed manual transmission features friction reduction measures for lasting performance, and lets you select gears quickly with confidence. Available on LX model only.



### Six airbags

To help protect occupants and potentially reduce injuries in the event of a collision, Picanto offers driver and front passenger airbags, two front-side airbags, and two side-curtain airbags.



## EXPERTISE IN WATCHING OUT



Overseas model shown



### Electronic Stability Control (ESC)

ESC ensures optimal braking performance and directional control by automatically delivering the right amount of braking force to each front wheel according to engine torque and driving conditions.



### Autonomous Emergency Braking (AEB)

Using camera and radar data (radar data only on LX), the Picanto senses the potential for a collision with a car or pedestrian ahead (car or object only on LX), and applies emergency braking to avoid or reduce the effects of a collision.



### Hill-Start Assist Control (HAC)

At a standstill on an incline, HAC prevents you from rolling backwards by gently applying the brakes for up to 2 seconds. From the time you lift your foot from the brake pedal, it gives you time to switch your foot smoothly to the accelerator.



### Rear parking sensors

Squeeze into tight parking spots with the help of rear parking sensors. As you reverse, loud beeps alert you the closer you get to a car or object.



## TRUE STYLE LIES WITHIN



### Apple CarPlay™ & Android Auto™

Apple CarPlay and Android Auto connect certain apps on your iPhone or Android smartphone to the Picanto's infotainment system. It equips your vehicle's audio system with display and control functions when your phone is plugged into the USB port.



### Start/Stop button + Smart Key

With the Smart Key in your bag or pocket, you can lock or unlock and even start your Picanto at the touch of a button. Available on EX, GT Line and X Line.



### Audio remote controls & Bluetooth® hands-free

Buttons mounted on the steering wheel let you adjust audio functions while your eyes stay on the road and your hands stay on the wheel. Built-in Bluetooth® connects paired, compatible mobile devices seamlessly, giving you easy access to music streaming and hands-free calls.



### Cruise control

Buttons at your fingertips let you set, adjust or cancel the cruise control system, simply and quickly.

# SMART TECHNOLOGY AT YOUR FINGERTIPS



Overseas model shown



## AUX and USB ports

Play your music your way by connecting audio players and mobile devices via USB or AUX cables for instant playback.



## Auto light control

Set the lights to 'Auto' and the front and rear lights will turn on or off automatically depending on lighting conditions.



## 8" Colour touchscreen audio

A vivid 8" colour LCD screen is shared by the rear view camera and the audio system. The large screen makes it simple to select radio stations and operate other audio system controls with the touch of a finger.



## Rear view camera with dynamic guidelines

The rear view camera helps you keep an eye on what's behind you while reversing. Dynamic guidelines indicate the path you're heading on, and will react as you reverse.



## LIFE REQUIRES REAL FLEXIBILITY



### Tilt steering wheel

Motor-driven power steering simplifies turning, while a tilt steering column lets you find the most comfortable driving position.



### 4.2" LCD segmented instrument cluster

A segmented cluster between the instrument dials keeps vital information front and center.



### ISOFIX child seat anchors

The Picanto is equipped with 2 x ISOFIX child seat anchor points, so you can cart your precious cargo around safely.



### Climate control

Enjoy one-touch comfort by simply setting your preferred temperature, and the automatic system will monitor and maintain the temperature until you change or cancel it. Available in GT Line and X Line.

## COMFORT AND ULTIMATE STYLE



Overseas model GT Line Red Pack interior shown



### Double tray

Located just below the temperature controls, the double tray provides a convenient space for sunglasses or smartphones.



### 60:40 Split rear folding seats

For maximum flexibility, the rear seatbacks split 60:40 and fold flat, allowing several combinations of people and cargo.



### Dual level luggage board

A dual level luggage board allows you to maximise your boot space depending on the size and quantity of luggage you have.



### Front cup holder

At the front of the console, dual cup holders keep drinks secure and close at hand.

## WANT GT LINE ATTITUDE?



### **Alloy pedals**

Racing inspired alloy pedals on the GT Line and X Line add to the fun of driving. Raised rubber grips help ensure confident footwork.



### **Interior trim upgrade**

Choose from a multitude of interior trim colours to take your interior to the next level. Available on EX, GT Line and X Line.



### **LED tail lights**

Not only do they brighten your presence at night, the LED tail lights add character to the GT Line and X Line.



### **Sports bumper**

An eye-catching bumper design gives the GT Line another point of difference.



## UP THE FUN WITH X LINE



### **Blind Spot Collision Avoidance Assist (BCA)**

Sensors monitor vehicles around the Picanto, with audio and visual alerts warning when a vehicle enters or approaches your blind spot. The Picanto will also apply Differential Braking when there is further risk of a collision with a vehicle in your blind spot during lane changes.



### **LED daytime running lights**

Stylish LED daytime running lights ensure added safety by clearly defining your position on the road. Available on GT Line and X Line.



### **Outside mirror indicators**

Enjoy a more luxurious look with body colour outside mirrors that incorporate LED side indicators, heating function and electric folding. Available on EX, GT Line and X Line.



### **Higher ground clearance**

Infused with a crossover-inspired styling design combined with higher ground clearance, the X Line gives you a more confident and clearer view of the road ahead. Overseas model shown.

## BODY COLOURS & WHEELS

### LX



#### Interior

Seat trim: Black / Grey  
Accent: Grey Stitch  
Material: Knit + Tricot

#### Exterior Colours



Clear White



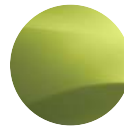
Astro Grey



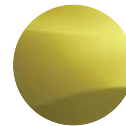
Shiny Red



Pop Orange



Lime Light



Honey Bee

### EX



#### Interior

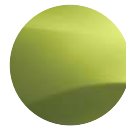
Seat trim: Black / Grey  
Accent: Grey Stitch  
Material: Knit + Tricot



Shiny Red



Pop Orange



Lime Light

### EX - Orange Pack



#### Interior

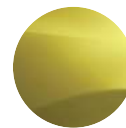
Seat trim: Black  
Accent: Orange Stitch  
Material: Tricot + Artificial Leather Bolsters



Clear White



Astro Grey



Honey Bee

### GT Line

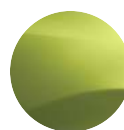


#### Interior

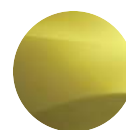
Seat trim: Black / Grey  
Accent: Grey Bolsters  
Material: Artificial Leather



Pop Orange



Lime Light



Honey Bee



# EXPRESS YOUR INDIVIDUALITY

## Exterior Colours

### GT Line - Red Pack



#### Interior

Seat trim: Black / Red  
Accent: Red Bolsters + Red Stitch  
Material: Artificial Leather



Clear White



Astro Grey



Shiny Red

### X Line



#### Interior

Seat trim: Black / Grey  
Accent: Grey Bolsters  
Material: Artificial Leather



Clear White



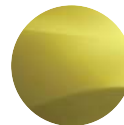
Astro Grey



Shiny Red



Pop Orange



Honey Bee

### X Line - Lime Pack



#### Interior

Seat trim: Black / Grey  
Accent: Grey Bolsters + Lime Stitch  
Material: Artificial Leather  
Overseas model shown



Lime Light



14" alloy wheel  
(LX)



15" alloy wheel  
(EX)



16" alloy wheel  
(GT Line & X Line)

# SPECIFICATIONS

ENGINE	LX MT / AT		EX	GT LINE	X LINE
Engine type	1.25L DOHC MPI D-CVVT petrol engine				
Displacement	1,248 cc				
Compression ratio	10.5 : 1				
Maximum power	62 kW @ 6,000 rpm				
Maximum torque	122 Nm @ 4,000 rpm				
Fuel economy (combined cycle)*	5.0L / 100 km (MT)	5.8L / 100 km			
CO <sub>2</sub> emissions (combined)	117g / km (MT)	134g / km			
TRANSMISSION					
Gearbox	5 speed manual	4 speed automatic			
Drivetrain	Front wheel drive				
SUSPENSION					
Front suspension	McPherson strut				
Rear suspension	Coupled Torsion Beam Axle (CTBA)				
WHEELS & TYRES					
Tyres / Wheels	175 / 65 R14	185 / 55 R15	195 / 45 R16		
Wheel size / Type	14" alloy	15" alloy	16" alloy		
Braking system	14" Ventilated front discs, 13" Solid rear discs with ABS, ESC, VSM & HAC				
Spare wheel type	Temporary steel				
STEERING					
Steering system	Motor Driven Power Steering (MDPS)				
Minimum turning radius	4.7 m				
Steering wheel adjustment	Tilt				
SAFETY FEATURES					
Safety Rating	4 Star ANCAP (2017 Standard)				
Forward Collision Avoidance Assist (FCA)	● (Car)	● (Car & Pedestrian)	● (Car & Pedestrian)	● (Car & Pedestrian)	
Lane Keep Assist System (LKAS) – Line / road edge	–	●	●	●	
Lane Follow Assist (LFA)	–	●	●	●	
Blind Spot Collision Avoidance Assist (BCA) – Rear	–	–	●	●	
Rear Cross Traffic Collision Avoidance Assist	–	–	●	●	
ABS brakes with EBD & BA	●	●	●	●	
Manual Speed Limit Assist	●	●	●	●	
Emergency Stop Signal (ESS)	●	●	●	●	
Hill-start Assist Control (HAC)	●	●	●	●	
Electronic Stability Control (ESC)	●	●	●	●	
Vehicle Stability Management (VSM)	●	●	●	●	
Dual front & side airbags	●	●	●	●	
Dual side curtain airbags	●	●	●	●	
Front seatbelt pretensioners	●	●	●	●	
3 point ELR seatbelts (all seats)	●	●	●	●	
Child safety door locks	●	●	●	●	
Child Seat Anchor Point – Rear Seat	2x ISOFIX / 3x top tether				
Manual child safety door locks	●	●	●	●	
Impact sensing door unlock	●	●	●	●	
Remote keyless entry	●	●	●	●	
Security alarm	●	●	●	●	
Engine immobiliser	●	●	●	●	
Rear parking sensors	●	●	●	●	
Rear view monitor with dynamic guidelines	●	●	●	●	
Seatbelt reminders for all seats	●	●	●	●	
EXTERIOR FEATURES					
Headlamps	Halogen bulb		Halogen Bi-Function Projection		
Daytime running lights	Halogen bulb		LED		
Side mirrors	Electrically adjustable	Electrically adjustable, heated & folding			
LED side mirror indicators	–	●	●	●	
Rear combination lamps	Halogen		LED		
Front fog lights	–	–	Projection		
Rear fog lights	Halogen		LED		
High-mounted brake light	●	●	●	●	
Outside Door Handle	Body colour	Chrome coating			
Beltline	Black paint		Chrome coating		
Privacy glass	–	●	●	●	
GT-LINE EXTERIOR PACKAGE					
GT-Line style glossy black radiator grille with coloured insert	–	–	●	–	
Body coloured side sill molding with coloured insert	–	–	●	–	
Rear skid plate – glossy black	–	–	●	–	
Twin outlet muffler	–	–	●	–	
X-LINE EXTERIOR PACKAGE					
X-Line style glossy black radiator grille	–	–	–	●	
Wheel arch molding – black	–	–	–	●	
Side sill molding – black	–	–	–	●	
Waistline – black paint	–	–	–	●	
Rear skid plate – silver paint	–	–	–	●	



INTERIOR FEATURES		LX MT / AT		EX		GT LINE		X LINE							
		LX MT / AT		EX		EX ORANGE PACK		GT LINE		GT LINE RED PACK		X LINE		X LINE LIME PACK	
Black Cloth Interior Trim		●		●		-		-		-		-		-	
Black Cloth Interior Trim + Artificial Leather Surrounds with Orange Stitch		-		-		●		-		-		-		-	
Black Artificial Leather Interior Trim	Grey stitch	-				-		●		-		●		-	
	Red stitch	-				-		-		●		-		-	
	Lime stitch	-				-		-		-		-		●	
Side air vents surrounds	Matte black	●						-		-					
	Silver metal paint	-				-		-		-		-		●	
	Black high gloss	-		●		-		●		●		●		-	
	Orange	-		-		●		-		-		-		-	
Gearshift indicator surrounds	Matte black	●				-		-		-		-		-	
	Silver metal paint	-		●		-		-		-		-		●	
	Black high gloss	-		-		-		●		●		●		-	
	Orange	-		-		●		-		-		-		-	
Door garnish	Matte black	●		-		-		-		-		-		-	
	Silver metal paint	-		●		-		-		-		-		-	
	Silver metal paint + lime pattern	-				-		-		-		-		●	
	Black high gloss	-				-		●		-		●		-	
	Black high gloss + orange pattern	-		-		-		●		-		-		-	
	Black high gloss + red pattern	-				-		-		●		-		-	
Steering wheel & gear shift knob material						-		-		-		-		-	
Composite leather															
Aluminium pedals		-				-		●		-		-		●	
Inside door handle				Silver metal paint						Satin chrome					
Adjustable driver's seat						Manual with height adjustment									
Height adjustable headrests with driver & passenger up / down & sliding		●				●				●				●	
Second row seating - 3 passengers						60 : 40 split back folding									
Front passenger's side seat back pocket		-				●		●		-		-		●	
Centre console storage box		-				●		●		-		-		●	
2x cupholders (floor console)		●				●		●		-		-		●	
COMFORT & CONVENIENCE															
Infotainment & Stereo System						8" touchscreen with radio, MP3 & 6 speakers									
Apple CarPlay™ ∞		●				●		●		-		-		●	
Android Auto™ †		●				●		●		-		-		●	
AUX / USB input		●				●		●		-		-		●	
Bluetooth® connectivity with voice recognition**		●				●		●		-		-		●	
1 x USB Port - Front console		●				●		●		-		-		●	
1 x 12V Power outlet - Front console		●				●		●		-		-		●	
Cruise control		●				●		●		-		-		●	
Steering wheel mounted controls						Audio, cruise control, speed limiter, Bluetooth® connectivity									
Air conditioning				Manual						Climate control					
Power windows						With driver's window auto up / down with safety functions									
Remote central locking		●				●		●		-		-		●	
Auto light control		●				●		●		-		-		●	
Smart key with engine start / stop button		-				●		●		-		-		●	
Instrument cluster						4.2" TFT colour LCD Supervision									
Multifunction trip computer		●				●		●		-		-		●	
Sunvisors with vanity mirrors		●				●		●		-		-		●	
Rear Parcel Shelf		●				●		●		-		-		●	
DIMENSIONS															
Overall length						3,595 mm								3,670 mm	
Overall width						1,595 mm								1,625 mm	
Overall height						1,485 mm								1,500 mm	
Wheelbase						2,400 mm								2,400 mm	
Minimum ground clearance						141 mm								156 mm	
WEIGHT & CAPACITY															
Kerb weight minimum / maximum		916 kg / 976 kg				916 kg / 976 kg				935 kg / 995 kg				939 kg / 999 kg	
Luggage capacity rear seats up / down						255 / 1,010 Litres (VDA)									
Fuel tank capacity						35 Litres									

Specifications, equipment and colours shown in this brochure are subject to change without notice or obligation.

\* Fuel consumption figures shown are from standard Australia Design Rules tests and are stated for the purpose of comparison.

Actual results achieved will differ according to operating conditions and driving style.

\*\* Not all handsets may be compatible.

∞ Apple CarPlay: Requires an iPhone 5 or later. It is recommended to always update your iPhone to the latest iOS release. Use the Apple Lightning® cable provided with your phone, or an Apple certified Lightning cable. Kia Motors cannot guarantee continued compatibility.

† Android Auto: Requires an Android phone with Android 5.0 Lollipop or higher. It is recommended to always update your phone to the latest OS release. Use the USB cable provided with your phone. Kia Motors cannot guarantee continued compatibility.



## ECO-CONSCIOUS

### **So you value sustainable living? We do too.**

That's why we take pride in rising to meet the expectations and challenges of the 21st century while making tangible contributions to the preservation of the environment and sustainable development of society.

Our environmental research centre spearheads our drive for the production of clean hybrid and fuel-cell vehicles to lead the way to eco-friendly cars for a greener tomorrow for you, your children and all of us.

From design through to recycling, we create innovative products, adhering to state-of-the-art Design for Recycling (DfR) guidelines. Even at the end of your car's life, we aim for eco-friendly return and treatment.

Operating a rigid process, we guarantee environmental protection in the treatment of harmful waste substances. These are then recycled or recovered, ensuring the highest level of environmental protection.

As you can see, what you do on a small scale with your household refuse, we at Kia Motors do on a large scale.





# SERVICES

---



## **5 YEAR** Warranty Programme

(UP TO 100,000 KM)

All new Kia Passenger Vehicles come with an impressive 5-Year/100,000 km (whichever comes first) Warranty Programme covering against manufacturing or assembly defects. This warranty programme is transferable between owners and emphasises our commitment to our customers.

---



## **5 YEAR** Roadside Assist

A Roadside Assistance Programme for the duration of the Warranty Period is also offered on every new Kia at no cost. In the unlikely event that your Kia has broken down, help is only a call away and trained staff will be despatched to your location. If a repair cannot be conducted on the spot, the vehicle will be towed free of charge to the nearest Kia dealer.

---



## **INCIDENT CARE**

If you and your new Kia were unfortunately involved in an incident or crash that requires body repairs to your Kia, Kia Incident Care is here to help you, and is free for the first five years.

Visit [Kia.co.nz](http://Kia.co.nz) for full details and terms & conditions.

# picanto

Kia.co.nz



The Power to Surprise