

Kia Sorento

Diesel / HEV / PHEV



Movement that inspires



AUGUST 2024

Overseas Model Shown

Sorento. Everything a luxury SUV should be.

Abundant interior space, the choice of strong and efficient powertrains and next generation technology come together in a stunning new design.

The new 7-seater Sorento redefines full-sized luxury with a style and sophistication that is unmistakably Kia.



Movement that inspires

Overseas Model Shown

To the power of three.

Sorento gives you the choice of three advanced powertrains, each offering spirited performance and strong towing, combined with outstanding economy.

The new Sorento HEV/PHEV is the first model in Kia New Zealand's line-up to offer future-proof engine technology at the current highest emissions standard (EU6e) that ensures maximum driving pleasure while contributing to the brand's commitment to a cleaner future. Now you can improve your engine's emissions without sacrificing the drive experience.

The Sorento Plug-in Hybrid (PHEV) gives you up to 55kms* of pure electric driving with the electric motor and 1.6-litre turbo-charged petrol engine combining to produce up to 186kW of power and 367Nm of torque.

The Sorento Hybrid (HEV) pairs the same petrol engine with a 1.5kWh battery and 44.2kW electric motor producing 158kW of combined power and 367Nm of torque.

The Sorento Diesel is the towing monster of the trio, generating 148kW and a huge 440Nm of torque with a 2.2L CRDi turbo diesel engine. Matched to an 8-Speed, Dual Clutch Transmission with Shift-By-Wire and Active AWD, the Diesel Sorento models perform with authority, both on and off road.



Overseas Model Shown



Overseas Model Shown



First class cabin.

With gorgeous details, rich textures and immersive sound, the interior of the new Sorento is a sublimely calming place to be.

There are so many special touches, you'll still be discovering new ones, long after your first drive.

Overseas Model Shown



Overseas Model Shown

3-stage heated front seats* and 3-stage ventilated front seats** with dual zone comfort control. Ventilated & heated 1st row seats and heated outer 2nd row seats available in Water and Premium models. With smart temperature comfort control, the Sorento automatically switches on the driver's heated seat and steering wheel* or ventilated seat if there's a big difference between the climate controls and the actual cabin temperature.



Overseas Model Shown



Overseas Model Shown

So accommodating.

Generous legroom and luxuriously supportive seating allow up to seven people to travel in complete comfort.

Stretch out and enjoy the journey, knowing you'll be completely refreshed and relaxed when you reach your destination.

Premium and Water Sorento models feature a 14-way power driver's seat, with 4-way lumbar support, cushion extension & 2-position memory plus a 10-way power front passenger seat.

*Available on Earth, Water, EX, Deluxe and Premium models.

**Available on Water and Premium models.

*Heated steering wheel available on EX, Deluxe, Premium and Water (HEV & PHEV) grades.

Technology in harmony.

Technology works best when you barely notice it. That's the beauty of the new Sorento with a host of intuitive systems working behind the scenes to make driving effortlessly enjoyable.



Ahead of the curve.

The panoramic, curved display integrates two 12.3" screens*, providing driving information, navigation and infotainment in an immersive driver experience. The infotainment touchscreen is completely customisable, so you can set it just the way you like it.

*12.3" Colour LCD Supervision Instrument Cluster available on EX, Deluxe, Premium, Earth & Water models.
4.2" Colour LCD Multifunction Instrument Cluster available on LX+ and Light models.

Automatically switch between climate and infotainment functions using the same set of controls.



With multiple USB ports and a wireless charging pad in the centre console of Deluxe, Premium, Earth and Water models, everyone can stay charged and connected.





Overseas Model Shown

Smart power tailgate.

With the hands-free smart power tailgate*, walk up to your Sorento, simply stand behind it for three seconds for the tailgate to open automatically. The smart power tailgate is customisable so you can pick the best height and speed at which it opens.

*Deluxe, Premium and Water models only.

Deluxe, Premium and Water models only.

The safest place to be.

From the open road to easing into a park, the Sorento's Advanced Driver Assistance System (ADAS) is constantly working to protect you and your passengers.



Diesel Models only. HEV & PHEV models ANCAP Safety rating under review.



Overseas Model Shown

Smart Cruise Control helps you maintain a safe distance from the vehicle ahead. If the vehicle ahead stops the Sorento will reduce the effects of a collision.



Overseas Model Shown

Lane Follow Assist helps you stay safely in the centre of your lane.



Overseas Model Shown

Blind spot Collision Avoidance Assist warns you if there is a risk of collision with a rear side vehicle in the blind spot while changing lanes.



Parking Collision Avoidance Assists - Reverse (PCA) provides a warning if there is a risk of collision with a rear object while reversing. It automatically assists with emergency braking if the risk of collision increases after the warning*.



Make it safely to all destinations with **Forward Collision-Avoidance Assist**. Using radar and camera data, the Sorento will sense the potential for a collision with a pedestrian, car or cyclist ahead and apply emergency braking to avoid or reduce the effects of a collision.



Surround View Monitor displays a variety of views of the situation around the vehicle for safe parking*.

*Available in EX, Deluxe, Premium and Water models only.

Details make the difference.



Instrument cluster
(4.2" Colour LCD Type: LX+ & Light grades)
(12.3" Colour LCD Type: EX, Deluxe, Premium, Earth & Water grades)



12-speaker Bose® premium sound system
(Deluxe, Premium & Water grades)



3rd Row A/C Fan Control & Vents
(EX, Deluxe, Premium, Earth & Water grades)



2nd row one-touch walk-in system

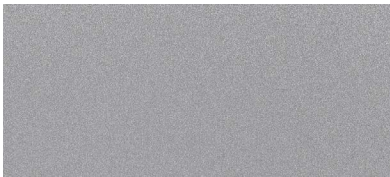


Integrated Driver's Seat Memory System
(Premium & Water grades)

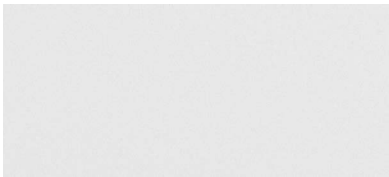


Seatback USB chargers
(EX, Deluxe, Premium & Water grades)

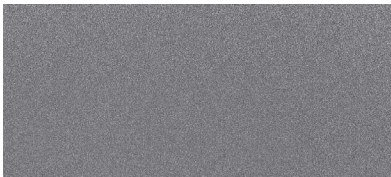
Colours.



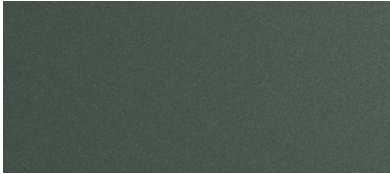
Silky Silver



Snow White Pearl



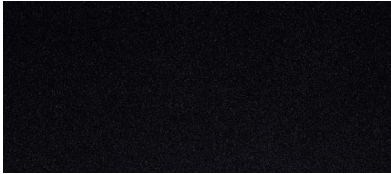
Steel Gray



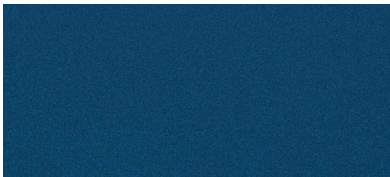
Cityscape Green



Interstellar Gray



Aurora Black Pearl



Mineral Blue

Wheels.



17-inch alloy
Hybrid 2WD Light,
Hybrid AWD Earth



18-inch alloy
LX+ & EX



19-inch alloy
Deluxe, Hybrid AWD Water,
PHEV Earth & Water



20-inch alloy
Premium

Specifications.

Sorento Diesel / HEV / PHEV

Specifications key:

- = included
- = not included

	DIESEL AWD				HYBRID 2WD	HYBRID AWD		PLUG-IN HYBRID AWD	
	LX+	EX	DELUXE	PREMIUM	LIGHT	EARTH	WATER	EARTH	WATER
MECHANICAL									
Engine	SmartStream In-line 4 Cyl. 2.2CRDi (Turbo Diesel)				1.6L-T GDI Petrol Turbocharged				
Displacement (cc)	2,151cc				1,598cc				
Compression Ratio	16.0 : 1				10.5 : 1				
Max. Power (kW @ rpm)	148 kW @ 3,800rpm				118 kW @ 5,500rpm				
Max. Torque (Nm @ rpm)	440 Nm @ 1,750 - 2,750rpm				265 Nm @ 1,500 - 3,500rpm				
Fuel Consumption (L/100km) - 3P-WLTP Combined*	7.0L / 100km				-				
CO2 Emissions (g/km) - 3P-WLTP Combined*	184g / km CO ₂				-				
HYBRID SYSTEM									
Hybrid Type	-	-	-	-	Parallel (Transmission Mounted Electric Device)				
Electric Motor Type	-	-	-	-	Permanent Magnet Synchronous Motor				
Fuel Economy - 3P-WLTP Combined*	-	-	-	-	5.5L / 100km	5.6L / 100km		1.5L / 100km	
CO ₂ Emissions - 3P-WLTP Combined*	-	-	-	-	124g / km	127g / km		34g / km	
Maximum Power - electric motor only	-	-	-	-	44.2 kW			66.9 kW	
Maximum Torque - electric motor only	-	-	-	-	264 Nm			304 Nm	
Battery Type	-	-	-	-	Lithium-Ion			Lithium-Ion	
Battery Energy	-	-	-	-	1.5 kWh			13.8 kWh	
Maximum Range in EV Mode**	-	-	-	-	-			55km	
Maximum Power - combined	-	-	-	-	158 kW			186 kW	
Maximum Torque - combined	-	-	-	-	367 Nm			367 Nm	
TRANSMISSION									
Gearbox	8 Speed Dual Clutch Transmission (Wet-Type)				6 Speed Automatic (Torque Converter)				
Shift Controller Type	E-Shift Dial (Shift-By-Wire)				E-Shift Dial (Shift-By-Wire)				
Drivetrain	Active AWD				Front Wheel Drive	Active AWD			
SUSPENSION									
Front Suspension	McPherson Strut				McPherson Strut				
Rear Suspension	Multi-link				Multi-link				
WHEELS & TYRES									
Tyres/Wheels	235/60 R18		235/55 R19	255/45 R20	235/65 R17	235/65 R17	235/55 R19	235/55 R19	235/55 R19
Wheels Size / Type	18" Alloy		19" Alloy	20" Alloy	17" Alloy	17" Alloy	19" Alloy	19" Alloy	19" Alloy
Tyre Pressure Monitoring System (TPMS)	●	●	●	●	●	●	●	●	●
Spare Wheel Type	Full Size Alloy				Full Size Alloy				
Braking System	325mm Ventilated Front and Rear Discs				325mm Ventilated Front and Rear Discs				
Electronic Parking Brake with Auto Hold	●	●	●	●	●	●	●	●	●
STEERING									
Steering System	Rack-mounted Motor Driven Power Steering (R-MDPS)				Rack-mounted Motor Driven Power Steering (R-MDPS)				
Drive Mode Select System	●	●	●	●	●	●	●	●	●
Terrain Mode Select	●	●	●	●	-	●	●	●	●
Minimum Turning Radius	5.8m				5.8m				

Specifications.

Sorento Diesel / HEV / PHEV (continued)

Specifications key:

- = included
- = not included

	DIESEL AWD				HYBRID 2WD	HYBRID AWD		PLUG-IN HYBRID AWD	
	LX+	EX	DELUXE	PREMIUM	LIGHT	EARTH	WATER	EARTH	WATER
COMFORT & CONVENIENCE FEATURES CONTINUED									
3rd Row fan control and vents	-	●	●	●	-	●	●	●	●
2nd Row vents (behind centre console)	●	●	●	●	●	●	●	●	●
Auto Window Defog System	●	●	●	●	●	●	●	●	●
Smart Proximity Key with Interior Engine Start/Stop Button	●	●	●	●	●	●	●	●	●
Remote Central Locking	●	●	●	●	●	●	●	●	●
Front & Rear Power Windows	●	●	●	●	●	●	●	●	●
Auto Up/Down Safety Windows	Drivers Only	All Windows			Drivers Only	All Windows			
Electrochromic Rear View Mirror	●	●	●	●	●	●	●	●	●
Low Washer Fluid Warning	●	●	●	●	●	●	●	●	●
Sun Shade Blinds (2nd Row)	-	-	●	●	-	-	●	-	●
Smart Power Tailgate (Height Adjustable)	-	-	●	●	-	-	●	-	●
Sliding-Type Sun Visors with Illuminated Vanity Mirrors	●	●	●	●	●	●	●	●	●
Rain Sensing Front Wipers	●	●	●	●	●	●	●	●	●
DIMENSIONS									
Overall Length (mm)	4,815 mm				4,815 mm				
Overall Width (mm)	1,900 mm				1,900 mm				
Overall Height (mm)	1,700 (with roof rails)				1,700 (with roof rails)				
Wheelbase (mm)	2,815 mm				2,815 mm				
Minimum Ground Clearance (mm)	176 mm				174 mm				
Tare Weight (kg)	1,926 kg				1,940 kg	2,003 kg		2,125 kg	
Cargo Capacity - 1st/2nd/3rd row (L, VDA)	1,996 L / 608 L / 179 L				1,996 L / 608 L / 179 L			1,988 L / 604 L / 175 L	
Fuel tank capacity (L)	67 L				67 L				
Towing Capacity - braked/unbraked (kg)	2,000 kg / 750 kg				1,650 kg / 750 kg			1,010 kg / 750 kg	
Max. towball download (kg)	200kg				100kg				

DISCLAIMER:

Information contained herein is for comparative purposes only. Specifications are correct at time of printing and may vary to the above at any given time.

* Fuel consumption figures shown are 3 Phase WLTP figures. Actual results achieved will differ according to operating conditions and driving style.

** Safety technologies are supplemental systems and do not replace the need for the driver to exercise care and attention.

*** Leather appointed seats may comprise of genuine leather, and other man-made leather-like materials or a combination thereof.

^ Not all smartphones / devices may be compatible with the vehicle's Bluetooth® and multimedia system.

∞ Apple CarPlay™ requires an iPhone 5 or later. It is recommended to always update your iPhone to the latest iOS release. Use the Apple Lightning® cable provided with your phone, or an Apple-certified Lightning cable. Kia cannot guarantee continued compatibility.

∞ Android Auto™ requires an Android phone with Android 5.0 Lollipop or higher. It is recommended to always update your phone to the latest OS release. Use the USB cable provided with your phone. Kia cannot guarantee continued compatibility.

Specifications apply to 2024 (MY25) Sorento Diesel, HEV & PHEV models. Kia New Zealand Limited reserves the right to discontinue or change the models, features, specifications, options, designs and prices of products referred to in this brochure without incurring any liability whatsoever to any purchaser or prospective purchaser of any such products.

Kia confidence goes further.

FOR I.C.E MODELS



FOR HEV/PHEV MODELS



All new Kia Passenger Vehicles come with an impressive 5-year/150,000km for I.C.E models or 7-year/150,000km for HEV/PHEVs (whichever comes first) Warranty Programme covering against manufacturing or assembly defects. This warranty programme is transferable between owners and emphasises our commitment to our customers.

FOR I.C.E MODELS



FOR HEV/PHEV MODELS



A Roadside Assistance Programme for the duration of the Warranty Period is also offered on every Kia Sorento Diesel, HEV & PHEV at no cost. In the unlikely event that your Kia has broken down, help is only a call away and trained staff will be dispatched to your location. If a repair cannot be conducted on the spot, the vehicle will be towed free of charge to the nearest Kia dealer.

FOR HEV/PHEV MODELS



All new Kia vehicles that are powered by a high-voltage drive battery come with a 8-year/160,000 km (whichever comes first) warranty that covers components found in the drive battery case. In the event that your vehicle becomes immobile due to a high voltage battery or system failure, we'll cover the cost of the tow to the nearest authorised Kia dealer.

