

Kia Sorento Diesel



Movement that inspires



Discover what a luxury SUV can be.

Abundant interior space, reassuring power and next generation technology brought together in a stunning new design. The new Sorento Diesel redefines full-sized luxury with a way that is unmistakably Kia.



Movement that inspires

Overseas Model Shown



An imposing presence.

Bold and handsome, the refreshed Sorento Diesel not only has a presence all of its own, it also responds to yours. In both the Deluxe and Premium models, walk up with your key and the Smart Power Tailgate senses your approach and opens for you automatically.



First class cabin.

Gorgeous details, luxurious textures, rich digital displays (EX onwards) and immersive sound. The interior of the new Sorento is a sublimely calming place to be. There are so many special touches, you'll still be discovering new ones, long after your first drive.

Overseas Model Shown

Personal space.

With generous amounts of legroom and luxuriously supportive seating, up to seven people can travel in comfort.

Stretch out and enjoy the view, knowing you'll be completely refreshed and relaxed when you reach your destination.



Overseas Model Shown



Overseas Model Shown

Technology in harmony.

Technology is at its best when you barely notice it. The new Sorento features a host of advanced but completely intuitive systems, designed to make your driving experience easy and effortless.



Ahead of the curve.

The wide, curved display integrates two 12.3" screens, provide driving information, key functions and infotainment in an immersive driver experience. The infotainment touchscreen is completely customisable, so you can set it just the way you like it.

12.3" Colour LCD Supervision Instrument Cluster available on EX, Deluxe, and Premium grades.
4.2" Colour LCD Multifunction Instrument Cluster available on LX+ grade.

Automatically switch between climate and infotainment functions using the same set of controls.



With multiple USB ports and a wireless charging pad in the centre console of Deluxe and Premium models, everyone can stay charged.





Premium models feature a 14-way power driver's seat, with 4-way lumbar support, cushion extension & 2 position memory plus a 10-way power front passenger seat.

Controls on the side of the front passenger seat allow the driver to move their backrest and adjust their seat electronically.



3-stage heated front seats* and 3-stage ventilated front seats** with dual zone comfort control. Ventilated & heated 1st row seats and heated outer 2nd row seats available in Premium models..



Overseas Model Shown

*Available on EX, Deluxe and Premium grades.

**Available on Premium grade.

The safest place to be.

From the open road to easing into a park, the Sorento's Advanced Driver Assistance System (ADAS) is constantly working to protect you and your passengers.



TESTED
2020



Overseas Model Shown

Smart Cruise Control helps you maintain a safe distance from the vehicle ahead. If the vehicle ahead stops abruptly, the Sorento automatically stops.



Lane Follow Assist helps you stay safely in the centre of your lane.



Blind spot Collision Avoidance Assist warns you if there is a risk of collision with a rear side vehicle in the blind spot while changing lanes.



Reverse Parking Collision-Avoidance Assist provides a warning if there is a risk of collision with a rear object while reversing. It automatically assists with emergency braking if the risk of collision increases after the warning*.



Forward Collision-Avoidance Assist warns you of a potential collision with a vehicle, pedestrian or cyclist ahead and assists with emergency braking if necessary. When changing lanes, automatic avoidance steering assistance is engaged if there is a risk of collision with an oncoming vehicle in the next lane.



Surround View Monitor displays a variety of views of the situation around the vehicle for safe parking*.

*Available in EX, Deluxe and Premium grades only.

Details make the difference.



Supervision cluster
(LX+ 4.2" colour LCD)
(EX, Deluxe, Premium 12.3" colour LCD)



12-speaker Bose® premium sound system
(Deluxe & Premium)



3rd Row A/C Fan Control & Vents
(EX, Deluxe & Premium)



2nd row one-touch walk-in system
Overseas Model Shown

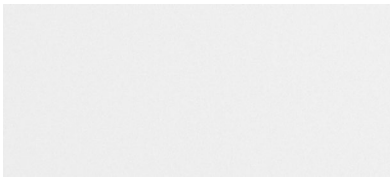


Integrated Driver's Seat Memory System
(Premium)

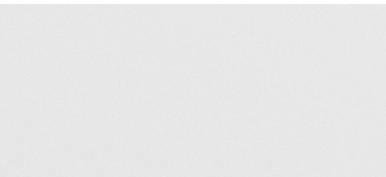


Seatback USB chargers
(EX, Deluxe & Premium)

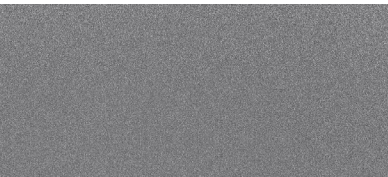
Colours.



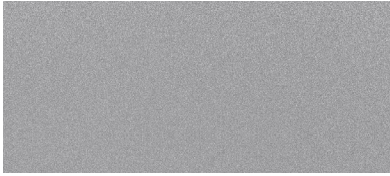
Clear White



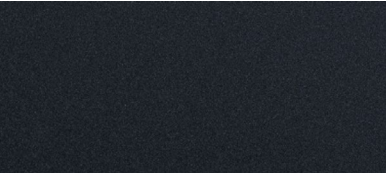
Snow White Pearl



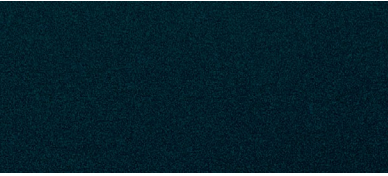
Steel Gray



Silky Silver



Interstellar Gray



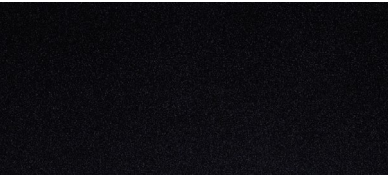
Gravity Blue



Cityscape Green



Mineral Blue



Aurora Black Pearl

Wheels



18-inch alloy
LX+ & EX



19-inch alloy
Deluxe



20-inch alloy
Premium

Specifications.

Sorento Diesel.

	LX+	EX	DELUXE	PREMIUM
DRIVETRAIN				
Engine	SmartStream In-line 4 Cyl. 2.2CRDi (Turbo Diesel)			
Displacement (cc)	2,151			
Compression Ratio	16.0 : 1			
Max. Power (kW @ rpm)	148 kW @ 3,800rpm			
Max. Torque (Nm @ rpm)	440 Nm @ 1,750 - 2,750rpm			
Fuel Consumption (L/100km) - 3PWLTP Combined	7.0L / 100km			
CO2 Emissions (g/km) - 3PWLTP Combined	184g / km CO ₂			
TRANSMISSION				
Gearbox	8 Speed Dual Clutch Transmission (Wet-Type)			
Shift Controller Type	E-Shift Dial (Shift-By-Wire)			
Drivetrain	Active AWD			
SUSPENSION				
Front Suspension	McPherson Strut			
Rear Suspension	Multi-link			
WHEELS & TYRES				
Tyres/Wheels	235/60 R18		235/55 R19	255/45 R20
Wheels Size / Type	18" Alloy		19" Alloy	20" Alloy
Tyre Pressure Monitoring System (TPMS)	●	●	●	●
Spare Wheel Type	Full Size Alloy			
Braking System	325mm Ventilated Front and Rear Discs			
Electronic Parking Brake with Auto Hold	●	●	●	●
STEERING				
Steering System	Rack-mounted Motor Driven Power Steering (R-MDPS)			
Drive Mode Select System	●	●	●	●
Terrain Mode Select	●	●	●	●
Minimum Turning Radius	5.8m			
Steering Wheel Adjustment	Tilt and telescopic			
SAFETY FEATURES				
Safety Rating	5★ ANCAP Safety Rating (2020 Stamp)			
Anti-lock Braking System (ABS)	●	●	●	●
Electronic Stability Control (ESC) with TCS	●	●	●	●
Vehicle Stability Management (VSM)	●	●	●	●
Multi Collision Brake (MCB)	●	●	●	●
Trailer Stability Assist (TSA)	●	●	●	●
Hill Start Assist Control (HAC)	●	●	●	●
Downhill Brake Control (DBC)	●	●	●	●
Emergency Stop Signal (ESS)	●	●	●	●
Forward Collision Avoidance Assist - Car/ Pedestrian/Cyclist/Junction	●	●	●	●
Blind Spot Collision Avoidance Assist (BCA)	●	●	●	●
Rear Cross Traffic Collision Avoidance Assist (RCCA)	●	●	●	●
Lane Keep Assist System (LKAS)	●	●	●	●
Lane Follow Assist (LFA)	●	●	●	●

Information contained herein is for comparative purposes only. Specifications at any given time may vary to the below.

	LX+	EX	DELUXE	PREMIUM
Blind Spot View Monitor (BVM)	-	●	●	●
Parking Collision Avoidance Assist - Reverse (PCA)	-	●	●	●
Driver Attention Alert (DAA+)	●	●	●	●
Manual Speed Limit Assist (MSLA)	●	●	●	●
Intelligent Speed Limit Assist (ISLA)	●	●	●	●
Smart High Beam Assist (HBA)	●	●	●	●
Front Driver and Passenger Airbags	●	●	●	●
Front Side Airbags	●	●	●	●
Curtain Airbags (1st and 2nd row)	●	●	●	●
Front Centre Side Airbag	●	●	●	●
Front Seat Pretensions with Load Limiters	●	●	●	●
3-Point ELR Seatbelts on all seats	●	●	●	●
Seatbelt Reminders for all seats	●	●	●	●
Child Restraint Anchorage Points (5x Top Tether & 4x ISOFIX)	●	●	●	●
Safe Exit Warning (SEW)	●	●	●	●
Safe Exit Assist (SEA)	-	-	-	●
Rear Seat Occupant Alert	●	●	●	●
Speed Sensing Auto Door Lock	●	●	●	●
Impact Sensing Auto Door Unlock	●	●	●	●
Child Safety Rear Door Locks	●	●	●	●
Power Child Safety Lock (Auto)	-	-	-	●
Engine Immobiliser	●	●	●	●
Parking Sensors	Front & Rear		Front , Side & Rear	
Rearview Camera with Dynamic Guidelines	●	-	-	-
Surround View Monitor with Dynamic Guidelines	-	●	●	●
EXTERIOR FEATURES				
LED Front Headlights (MFR Type)	●	●	●	-
LED small cube projection Front Headlights	-	-	-	●
Auto Light Control	●	●	●	●
LED Rear Combination Lights		Bulb	●	●
LED Daytime Running Lights	●	●	●	●
LED Front & Rear Fog Lights	●	●	●	●
Rear Spoiler with LED High Mounted Stop Light	●	●	●	●
Panoramic Power Sunroof	-	-	-	●
Roof Rails	●	●	●	●
Electrically Adjustable, Heated and Folding Outside Mirrors	●	●	●	●
Body Coloured Outside Mirror with LED Side Indicators	●	●	●	●
Satin Chrome Coloured Exterior Door Handles	●	●	●	●
Glossy Black Radiator Grille Finish	-	●	●	●
Front and Rear Mudguards	●	●	●	●
Chrome Finish Skid Plate (Front and Rear)	-	●	●	●
Chrome Coating Exterior Door Garnish	●	●	●	●

Specifications.

Sorento Diesel.

	LX+	EX	DELUXE	PREMIUM
Satin Chrome Window Beltline	●	●	●	●
Acoustic Film (Windshield)	●	●	●	●
Solar Glass (Windshield & Front Door)	●	●	●	●
Privacy Glass (Rear Windows & Tailgate)	-	●	●	●
Aero Blade Front Wipers	-	●	●	●
Rear Wiper (Hidden type)	●	●	●	●
INTERIOR FEATURES				
Seating Configuration		7 Seats		
Interior Seat Trim	Cloth	Leather		Nappa Leather
Composite Leather Steering Wheel with Paddle shifters	●	●	●	●
Heated Steering Wheel	-	●	●	●
6-Way Manual Driver Seat Incl. Height Adjust (Pumping Device)	●	-	-	-
6-Way Manual Front Passenger's Seat Incl. Height Adjust (Pumping Device)	●	●	-	-
10-Way Power Driver's Seat (Incl. 2-Way Lumbar Support)	-	●	●	-
14-Way Power Driver's Seat (Incl. 4-Way Lumbar Support and Cushion Extension)	-	-	-	●
Memory Driver's Seat (2 Settings)	-	-	-	●
10-way Power Front Passenger's Seat (Incl. 2-Way Lumbar Support)	-	-	-	●
2nd Row Sliding Walk-In Device	●	●	●	●
Sliding & Reclining 2nd Row Seats (60:40)	●	●	●	●
One-Touch Remote Folding 2nd Row Seats	●	●	●	●
2nd Row Centre Armrest	●	●	●	●
Front Seat Headrests Adjustment (Up/Down/ Sliding)	●	●	●	●
Height Adjustable Headrests (All Seats)	●	●	●	●
Height Adjustable Front Seatbelts	●	●	●	●
3-Stage Heated Front Seats	-	●	●	●
2-Stage Heated Rear Seats (2nd Row Outer Seats)	-	-	-	●
3-Stage Ventilated Front Seats	-	-	-	●
Driver & Front Passenger Seat Back Panel With Pocket	●	-	-	-
Driver & Front Passenger Seat Back Panel With Pocket - Premium	-	●	●	●
Interior Mood Lighting	-	-	●	●
LED Interior Lights (Front & Rear)		Bulb		●
Cloth A/B Pillar Cover	-	-	●	●
Alloy Pedals	-	-	●	●
Inside Door Handle		Metal Paint		ION Plating
Centre Fascia Trim		Metal Paint		Insert Film
Luggage Screen	●	●	●	●
Luggage Net Hook	●	●	●	●
Under Floor Box	●	●	●	●

Information contained herein is for comparative purposes only. Specifications at any given time may vary to the below.

	LX+	EX	DELUXE	PREMIUM
COMFORT & CONVENIENCE				
4.2" Colour LCD Multifunction Instrument Cluster	●	-	-	-
12.3" Colour LCD Supervision Instrument Cluster	-	●	●	●
12.3" Satellite Navigation System	●	●	●	●
6 Speaker Audio System	●	●	-	-
BOSE® Premium Sound System with 12 Speakers	-	-	●	●
Android Auto™ & Apple Carplay™	●	●	●	●
Bluetooth® Multi-connection functionality	●	●	●	●
Shark Fin Antenna	●	●	●	●
2x 12v Power Outlets (1x Behind Centre Console & 1x Cargo Area)	●	●	●	●
1st row USB charger (2x Front Console)	●	●	●	●
2nd row USB chargers (2x behind 1st row seats)	-	●	●	●
3rd row USB Charger (Cargo area)	-	-	●	●
Wireless Phone Fast Charging (Qi)	-	-	●	●
Head-up Display (Windshield-type)	-	●	●	●
Steering Wheel Mounted Audio & Cruise Controls	●	●	●	●
Advanced Smart Cruise Control (ASCC)	●	●	●	●
Dual Zone Automatic Climate Control	●	●	●	●
3rd Row fan control and vents	-	●	●	●
2nd Row vents (behind centre console)	●	●	●	●
Auto Window Defog System	●	●	●	●
Smart Proximity Key with Interior Engine Start/ Stop Button & Remote Engine Start	●	●	●	●
Remote Central Locking	●	●	●	●
Front & Rear Power Windows	●	●	●	●
Auto Up/Down Safety Windows	Drivers Only		All Windows	
Electrochromic Rear View Mirror	●	●	●	●
Low Washer Fluid Warning	●	●	●	●
Sun Shade Blinds (2nd Row)	-	-	●	●
Smart Power Tailgate (Height Adjustable)	-	-	●	●
Sliding-Type Sun Visors with Illuminated Vanity Mirrors	●	●	●	●
Rain Sensing Front Wipers	●	●	●	●
DIMENSIONS				
Overall Length (mm)	4,815 mm			
Overall Width (mm)	1,900 mm			
Overall Height (mm)	1,700 (with roof rails)			
Wheelbase (mm)	2,815 mm			
Minimum Ground Clearance (mm)	176 mm			
Tare Weight (kg)	1,877 kg			
Cargo Capacity - 1st/2nd/3rd row (L, VDA)	1,996 / 608 / 179			
Fuel tank capacity (L)	67			
Towing Capacity - braked/unbraked (kg)	2,000 / 750			
Max. towball download (kg)	200			

Kia confidence goes further.



All new Kia Passenger Vehicles come with an impressive 5-Year/150,000 km (whichever comes first) Warranty Programme covering against manufacturing or assembly defects. This warranty programme is transferable between owners and emphasises our commitment to our customers.



If you and your new Kia were unfortunately involved in an incident or crash that requires body repairs to your Kia, Kia Incident Care is here to help you, and is free for the first five years.



A Roadside Assistance Programme for the duration of the Warranty Period is also offered on every new Kia at no cost. In the unlikely event that your Kia has broken down, help is only a call away and trained staff will be dispatched to your location. If a repair cannot be conducted on the spot, the vehicle will be towed free of charge to the nearest Kia dealer.





Movement that inspires